

From: [REDACTED]
To: [Manston Airport](#)
Subject: PLEASE SEE OUR EMAIL JUST SENT
Date: 21 May 2019 16:23:17
Attachments: [District-unemployment-bulletin.pdf](#)

Dear Sirs

This is in support of our email just sent.

kind regards

Susan and John Hennessy



We would like to see Manston Airport returned to a working aviation centre to provide sorely needed extra capacity for both airfreight and passengers. A case is currently being made for the further expansion of facilities at both Gatwick and Heathrow Airports to serve an identified growing need. This expansion will cause disruption to their surrounding areas and will take some time to achieve if it proves possible at all. A ready made proven airport facility currently stands idle at Manston and this could be made operational with minimum cost and disruption by reinstating the facilities which have been removed by the current owners.

A benefit of the installation of new replacement equipment would of course provide an airport with state of the art capability. Manston is ideally placed geographically for ease of access to the continent and is well connected to the national motorway system. The proposed new Thames crossing linking the M2 to the road network to the East of the Country would elevate pressure on the M25 which would be increased by any expansion of both Heathrow and Gatwick which predominately serve the area to the West and South West of London.

Airfreight via Manston would also relieve pressure on imports and exports through the Port of Dover and the already congested M20 and the M2 Dover to Canterbury road.

The use of Manston for passenger flights would allow far easier access for the people of South East England -current journeys to Gatwick/Heathrow are virtually impossible by public transport and involve at least 2 hours road travel.

As well as providing employment directly linked to the Airport, Manston would also make the local area (a current national employment black spot) much more attractive to both national and international employers. This would particularly benefit the young people of the area whose employment prospects at present are extremely limited. Please see the attachment at www.kent.gov.uk/research heading 'Kent Unemployment November 2018', line 3 'Thanet has the highest unemployment rate at 5.2%. and line 5 'Thanet has the highest 18-24 year old unemployment rate in the South East at 8.1% Also heading 'Unemployment in Kent' updated 11th December 2018 - Unemployment by age group per cent of all unemployed November 2018 18-24 number 4,270 %of all unemployed 21.5 per cent. Please also see graph and Ward map contained therein: Source : ONS Claimant Count presented by Strategic Commission Analytics Kent County Council.

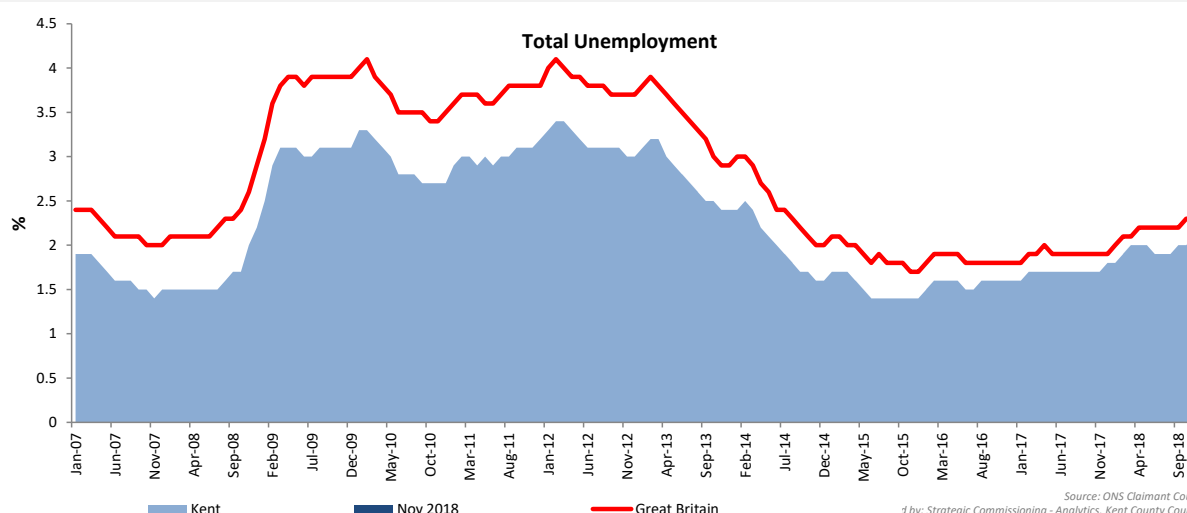
The alternative proposal of building housing on such a valuable national asset as an airport would add nothing to the local area. There are already numerous large housing developments in the area which are putting additional pressure on the employment market and facilities such as education and especially healthcare and our local hospitals.

The reopening of Manston as a working airport will bring much needed employment opportunities for existing residents, the space for further capacity in the future and a vehicle for the economic expansion of the whole of Thanet and East Kent generally.

Unemployment in Kent

Last updated: 11 Dec 2018

Using information from the Office for National Statistics Claimant Count this bulletin looks at the total number of people claiming either Jobseekers Allowance or Universal Credit **principally for the reason of being unemployed**. It also looks at the age profile of claimants, in particular at youth unemployment which is defined as those aged 18 to 24.



Nov 2018			Change since Oct 2018		Change since Nov 2017	
Unemployment	Number	% Rate	Number	%	Number	%
Kent	19,815	2.1%	580	3.0%	3,710	23.0%
Great Britain	934,990	2.3%	15,135	1.6%	171,225	22.4%

	Nov 2018		Change since Oct 2018		Change since Nov 2017	
	Number	% Rate	Number	%	Number	%
Ashford	1,635	2.1%	85	5.5%	400	32.4%
Canterbury	1,685	1.6%	95	6.0%	380	29.1%
Dartford	865	1.3%	35	4.2%	95	12.3%
Dover	2,330	3.4%	35	1.5%	450	23.9%
Folkestone & Hythe	1,820	2.8%	65	3.7%	460	33.8%
Gravesham	1,575	2.4%	45	2.9%	225	16.7%
Maidstone	1,175	1.1%	5	0.4%	-25	-2.1%
Sevenoaks	515	0.7%	35	7.3%	5	1.0%
Swale	2,770	3.1%	60	2.2%	765	38.2%
Thanet	4,220	5.2%	110	2.7%	1,115	35.9%
Tonbridge and Malling	655	0.8%	-5	-0.8%	-80	-10.9%
Tunbridge Wells	570	0.8%	15	2.7%	-75	-11.6%
Medway	3,905	2.2%	55	1.4%	625	19.1%
Kent	19,815	2.1%	580	3.0%	3,710	23.0%

Kent unemployment headlines November 2018

The unemployment rate in Kent is 2.1%. This is below the rate for Great Britain (2.3%).

19,815 people were claiming unemployment benefits in Kent. This has increased since last month.

Thanet has the highest unemployment rate at 5.2%. Sevenoaks has the lowest unemployment rate at 0.7%.

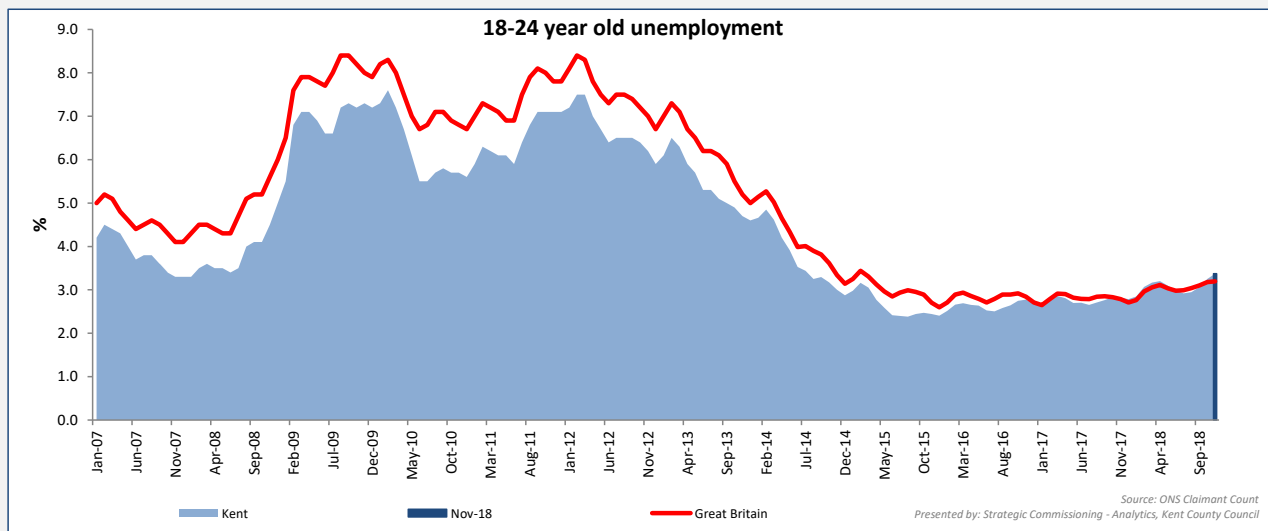
The 18-24 year old unemployment rate in Kent is 3.3%. They account for 21.5% of all unemployed people in the area

Thanet has the highest 18-24 year old unemployment rate in the South East at 8.1%.

Unemployment by age group

Kent	Nov 2018		Change since Oct 2018		Change since Nov 2017	
	Number	%	Number	%	Number	%
18-24	4,270	3.4%	155	3.8%	705	19.8%
25-49	9,945	2.1%	240	2.5%	1,975	24.8%
50-64	5,545	1.8%	175	3.3%	1,005	22.1%

November 2018	Number			Rate		
	18-24	25-49	50-64	18-24	25-49	50-64
Ashford	390	790	445	4.3%	2.0%	1.8%
Canterbury	385	835	460	1.4%	1.8%	1.6%
Dartford	190	470	205	2.5%	1.2%	1.1%
Dover	485	1165	675	5.8%	3.6%	2.7%
Folkestone & Hythe	360	890	565	4.7%	2.8%	2.4%
Gravesham	335	805	430	4.2%	2.3%	2.2%
Maidstone	225	605	345	1.9%	1.1%	1.1%
Sevenoaks	100	250	160	1.3%	0.7%	0.7%
Swale	700	1330	725	6.1%	2.9%	2.5%
Thanet	875	2200	1140	8.2%	5.5%	4.1%
Tonbridge and Malling	135	300	215	1.5%	0.7%	0.9%
Tunbridge Wells	90	305	175	1.2%	0.8%	0.8%
Kent	4270	9945	5545	3.4%	2.1%	1.8%
Medway	840	2030	1020	3.5%	2.2%	2.0%

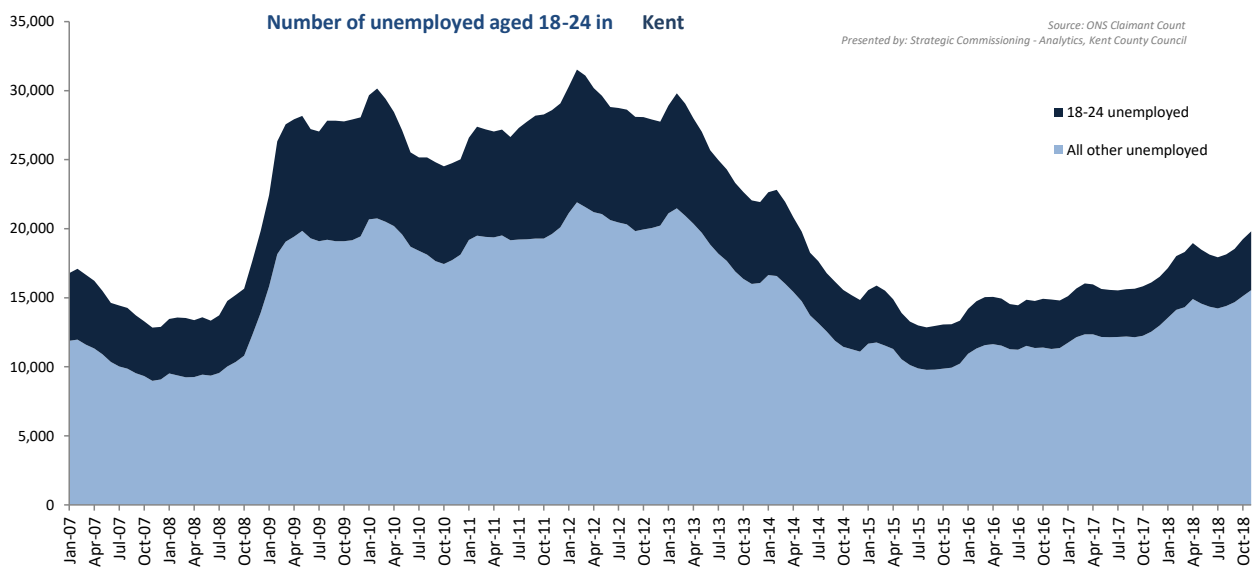
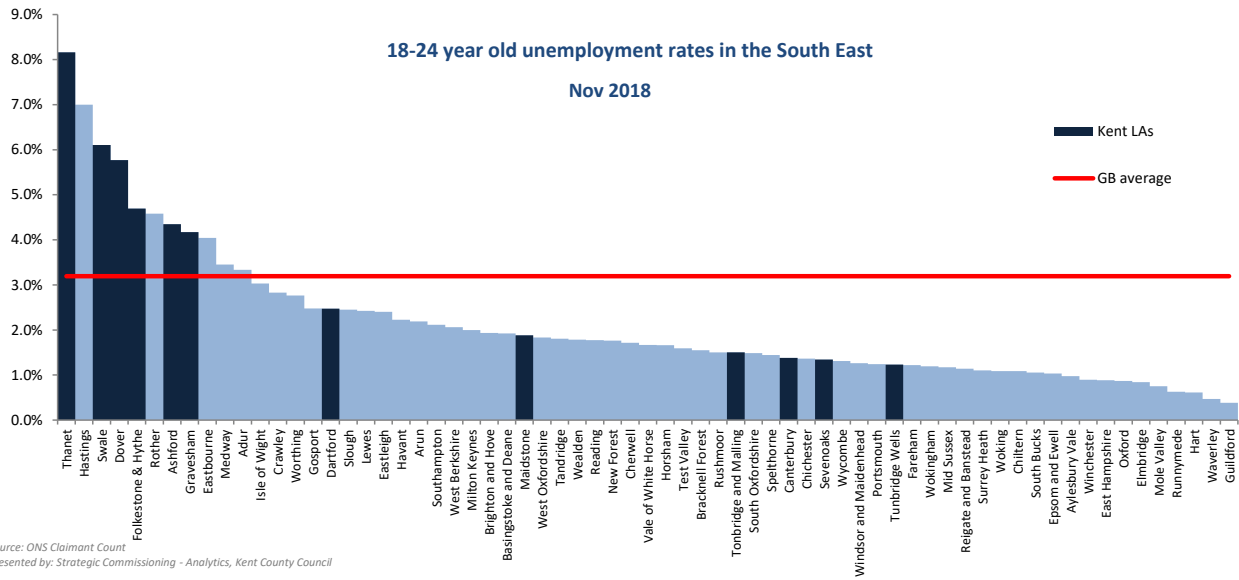


18-24 Unemployment	Number	Rate	Change since Oct 2018		Change since Nov 2017	
			Number	%	Number	%
Kent	4,270	3.4%	155	3.8%	705	19.8%
Great Britain	178,610	3.2%	710	0.4%	22,920	14.7%

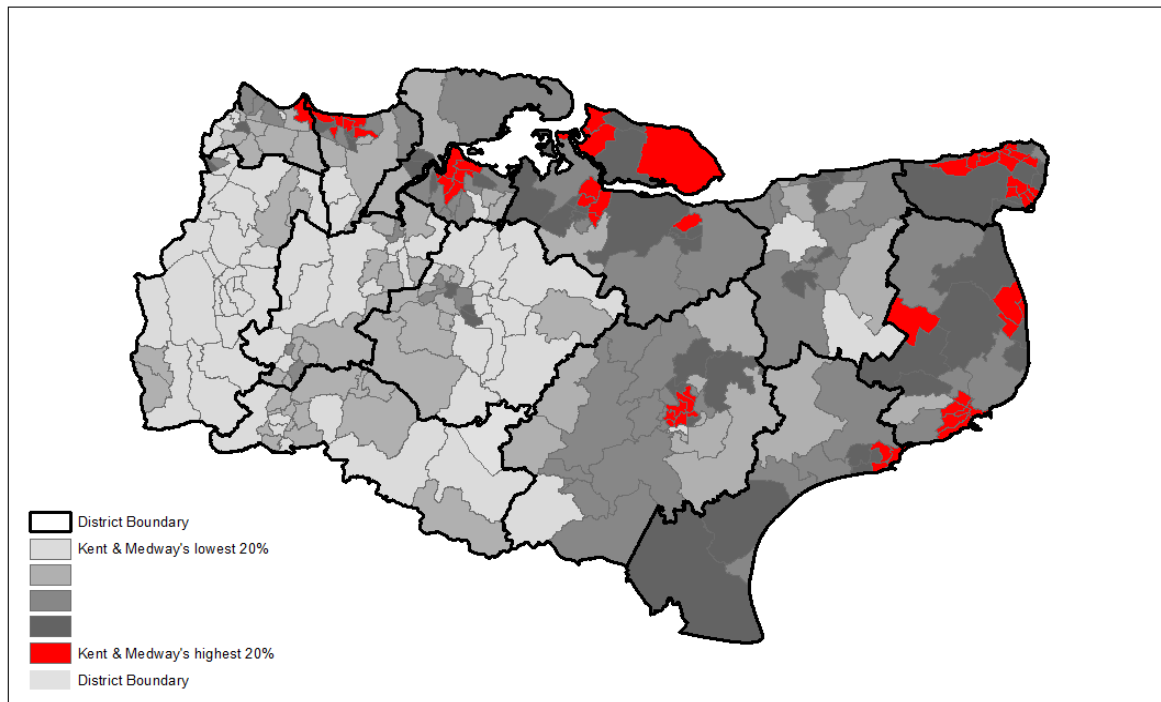
Unemployment by age group - % of all unemployed

November 2018

	Kent		Great Britain	
	Number	% of all unemployed	Number	% of all unemployed
18-24	4,270	21.5%	178,610	19.1%
25-49	9,945	50.2%	506,520	54.2%
50-64	5,545	28.0%	247,000	26.4%



Ward unemployment rates November 2018



Source: NOMIS Claimant Count
 This map is produced by Strategic Commissioning - Analytics, Kent County Council
 © Crown Copyright and database right 2018, Ordnance Survey 100019238



This workbook looks at the total number of people claiming either Jobseekers Allowance or Universal Credit principally for the reason of being unemployed. It also looks at the age profile of claimants, in particular at youth unemployment which is defined as those aged 18 to 24.

This workbook uses information from a dataset called The Claimant Count by Sex and Age. This experimental series counts the number of people claiming Jobseeker's Allowance plus those who claim Universal Credit who are out of work. The dataset currently includes some out of work claimants of Universal Credit who are not required to look for work; for example, due to illness or disability. Therefore this dataset is considered experimental and the results should be interpreted with caution.

Unemployment rates are calculated using the Office for National Statistics Mid-year Population Estimates 2001-2017. The resident working age population is defined as all males and females aged 16-64. These denominators will be updated annually with the ONS mid-year population estimates.

Data back to December 2014 were revised by ONS on 18th October 2017. This bulletin contains these revisions and therefore supersedes any previously released data.

Introduction of Universal Credit

Since 2013 the roll out of Universal Credit has progressed across across the UK. Universal Credit will replace a number of means-tested benefits including the means-tested element of Jobseeker's Allowance (JSA).

From April 2015 Universal Credit started to be rolled out within Kent. It is now available in all Jobcentre areas in Kent & Medway. Initially it was only available to single claimants without a partner and without child dependents however in 2017 the full roll out of Universal Credit to all claimant types began. The following table shows the planned roll out within Kent districts.

As announced in June 2018 the government will start to migrate existing claimants of the benefits that are being replaced to Universal Credit early in 2019. It hopes to migrate all existing benefit claimants to Universal Credit by March 2023.

Date of roll out	Job Centre Plus Office	District Served
May-17	Dover	Dover
Jul-17	Margate	Thanet
Jul-17	Ramsgate	Thanet
Dec-17	Sheerness	Swale
Dec-17	Sittingbourne	Swale
Feb-18	Gravesend	Gravesham
Feb-18	Gravesend	Sevenoaks (part)
Feb-18	Folkestone	Folkestone & Hythe
Feb-18	Chatham	Medway
Mar-18	Ashford	Ashford
Apr-18	Canterbury	Canterbury
Apr-18	Hernebay	Canterbury
Apr-18	Whitstable	Canterbury
May-18	Dartford	Dartford
May-18	Dartford	Sevenoaks (part)
Aug-18	Maidstone	Maidstone
Aug-18	Tonbridge	Tonbridge & Malling
Aug-18	Tonbridge	Tunbridge Wells

For more information on Universal Credit: <https://www.gov.uk/universal-credit>

Produced by:
Strategic Commissioning - Analytics,
Strategic & Corporate Services,
Kent County Council

Tel: 03000 417444

